

**A Leader in Construction Digitalisation  
(Private Sector)**



**Introduction of the Organisation**

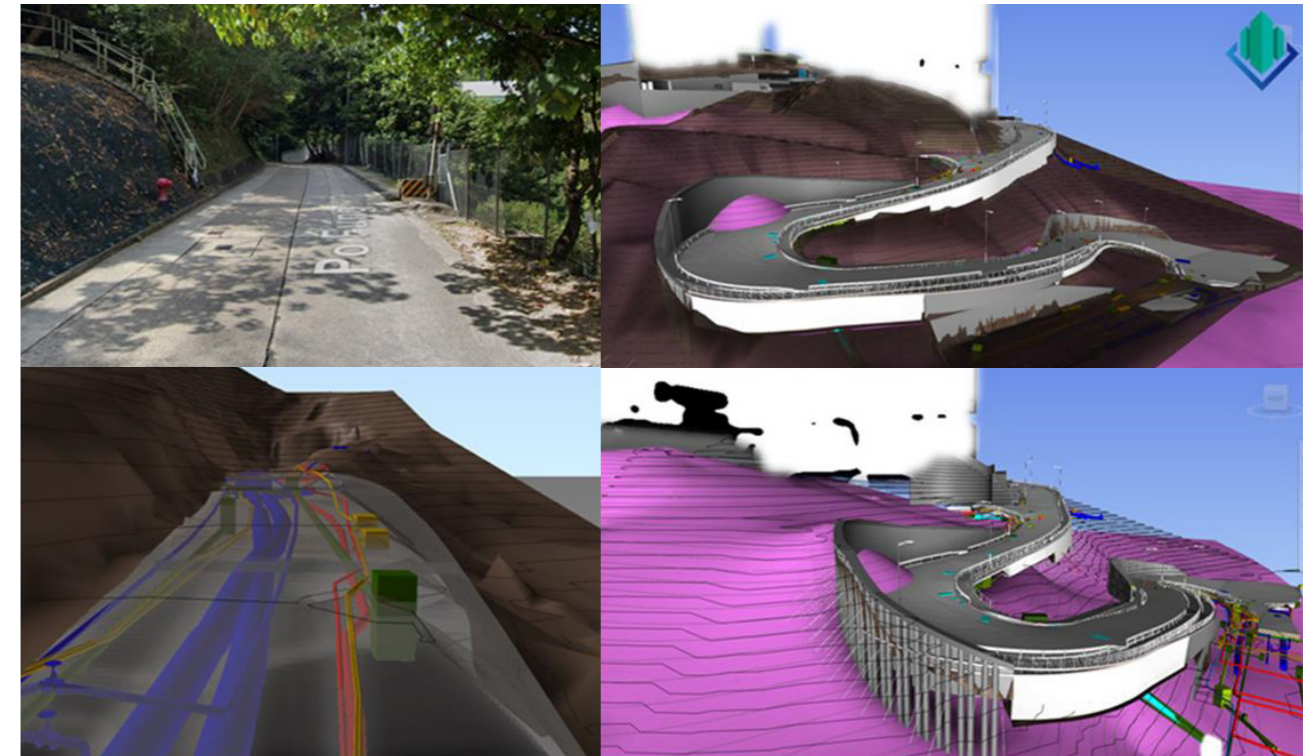
Kerry Properties Limited (KPL), listed on The Stock Exchange of Hong Kong Limited (Stock code 683) since 1996, has been a vanguard in property investment and development in Hong Kong since 1978. As a world-class property company with significant investments in Mainland China and Hong Kong, it is a constituent stock in the Hang Seng Composite Index, Hang Seng Composite MidCap Index, and Hang Seng Composite Industry Index (Properties & Construction). Kerry Properties is lauded for its commitment to sustainability, evidenced by its highest 5-Star Rating from the Global Real Estate Sustainability Benchmark (GRESB) and its inclusion in the FTSE4Good Index Series, Hang Seng Corporate Sustainability Index Series, and Hang Seng ESG 50 Index.

The company's pioneering spirit extends to the HK construction industry, where it leads with a dedicated in-house digital team to explore and develop all possible digital solutions to enhance the efficiency in both management & operation, cost saving through risk management, and continuous people development.

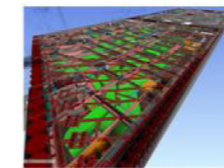
KPL's innovative approach is showcased in projects like Mont Verra, La Marina, and La Montagne, highlighting its digital prowess and commitment.

KPL set an industry benchmark in 2018 by adopting a full BIM process for a private development project, demonstrating its vision to lead the private sector in digitalisation. This initiative underscores the company's digital capabilities and its role as a trailblazer in the construction industry.

With its strong vision and history of innovation, KPL stands as a prime candidate for exemplifying its dedication to advancing the industry through digital technology.



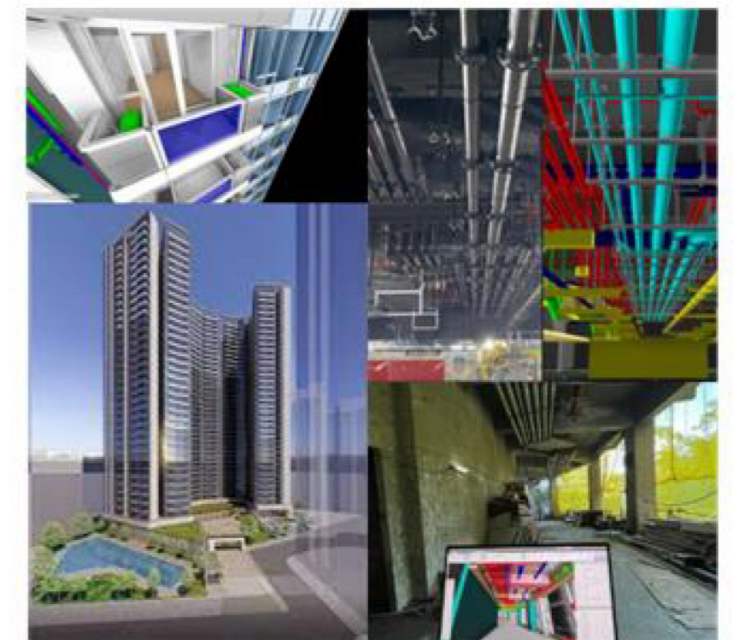
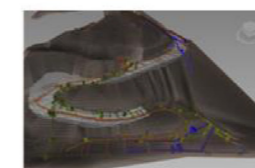
**2021 Proposed Composite Redevelopment at Hung Fook Street / Ngan Hon Street**



**2022 Proposed Residential Redevelopment at Hill Road**



**2023 Proposed Residential Development at Po Fung Road**



**2019 - La Montagne**  
Full BIM Adoption + CDE