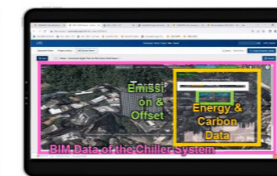
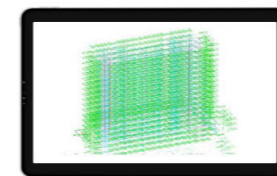
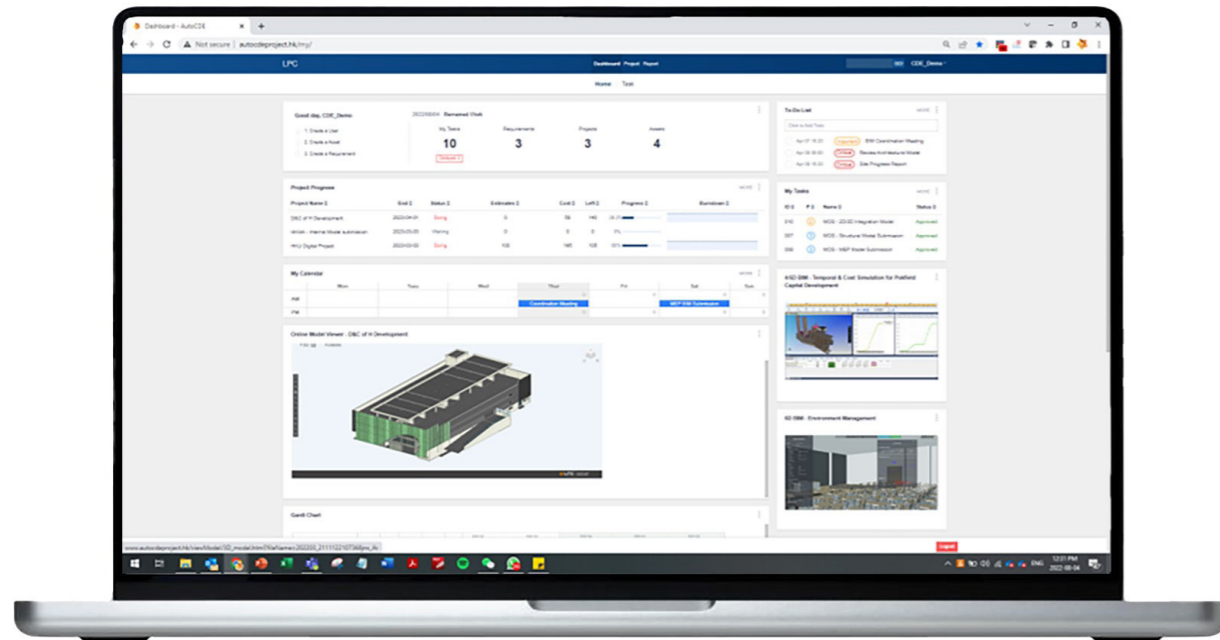


Llewellyn and Partners Company Limited



BRONZE



TOTAL SERVICES
Standardisation and tech solutions using BIM, GIS, A.I., IoT, Blockchain



TECHNOLOGY
All-in-one smart built asset platform solution for smarter city & carbon



ESG
Standard-compliant carbon quantification & management



ACADEMY
Tailor-made trainings on standardisation & technology

Introduction of the Organisation

With over a decade of practical experience in the AECO industries in the UK, China and Hong Kong, Llewellyn and Partners Company Limited (LPC)'s mission is to reshape the AEC ecosystem with revolutionary products using BIM, GIS, A.I., IoT and Blockchain technologies.

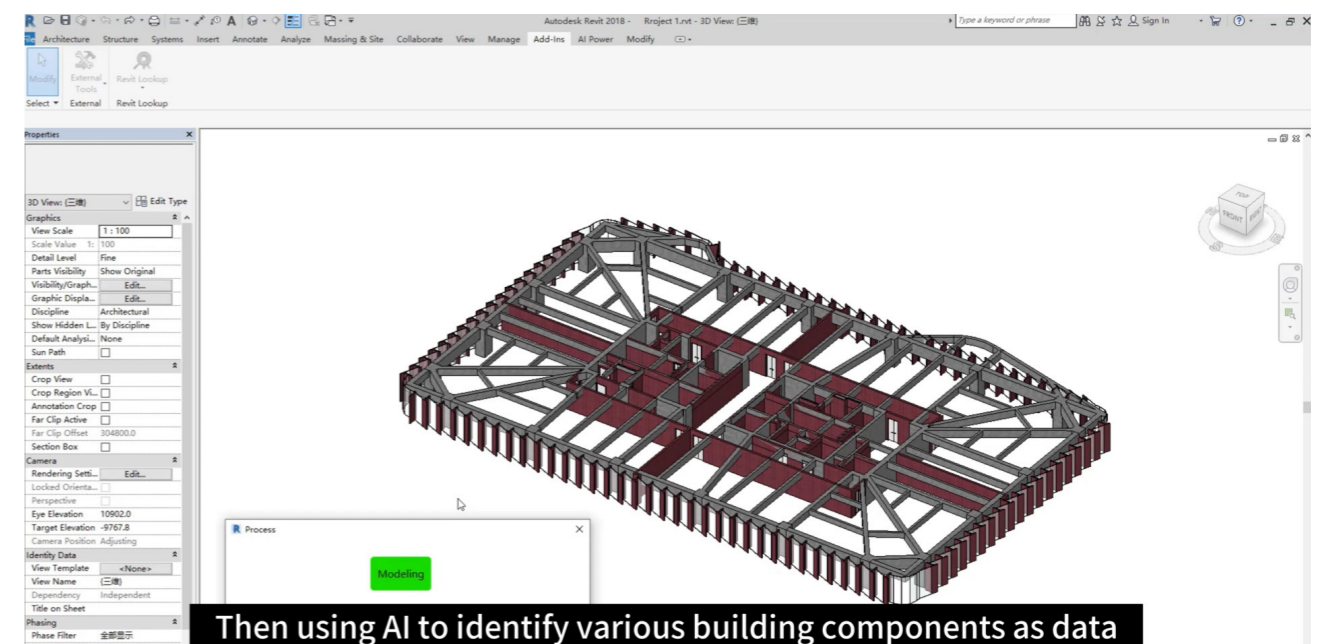
Founded in 2019, we are the first potential unicorn incubated by the HKU MetaBIM Research Laboratory and a member company of Incu-Tech Programme of HKSTP that focus on the cutting-edge technologies for smart assets. Based on our R&D achievements, our unprecedented ISO-compliant products empower the industry for the new construction normal – digitalisation, standardisation, integration, and industrialisation. We offer total services in consultancy, research, platform development, carbon quantification and training. In 2021, we become the first company in the world to receive BSI Kitemark™ for BIM Software as a global recognition of achieving full compliance of ISO 19650. Our success has demonstrated in various awarded adoption projects for public and private clients.

LPC's SuperApp-AutoCDE digitises and standardises data in a variety of formats using our patented AI-BIM engine, such as 2D drawing models, laser scans,

documents, PDFs, photos and Internet-of-Things data, and turns that data into three-dimensional environments incorporating BIM and GIS to form a Digital Twin. The Digital Twin can analyse carbon emissions across entire built assets and give insights based on a client's targets, in a format that is much easier to understand than 2D drawings, charts and reports.

LPC currently has its headquarters in the Hong Kong Science & Technology Park. Three other branch offices are located in the Hong Kong Cyberport, China (Shenzhen and Guangxi) and plans to expand into the APAC and UAE regions.

LPC gained international and local recognitions with 20+ awards such as Bronze in CIC Digitalization Award 2021, Geneva Silver Medal on BIM Innovation 2021, Special Mention in CIC CDE Award 2022 and Outstanding ESG Solution for Smart Cities of FinTech Award 2023 in ESG Solutions, Silver in Software and Apps, ICT Startup Award 2023 Hong Kong ICT Awards etc.



Then using AI to identify various building components as data